

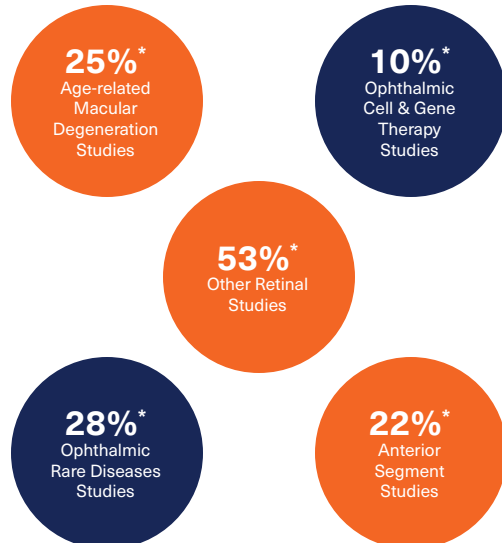
Ophthalmology

Collaborate with our global clinical operations team to advance your vision research

Trusted by biopharmaceutical and government clients for over 35 years, our ophthalmic full scope clinical trial support spans age-related diseases, rare and orphan diseases, as well as cellular and gene therapies.

Emmes has formed a strong ophthalmic network through long-standing relationships with many retina clinical trial sites and investigators. This decreases study start time and allows for participants to receive potential therapeutics on an abbreviated timeline.

Emmes' ophthalmic experience spans to over 150 clinical studies



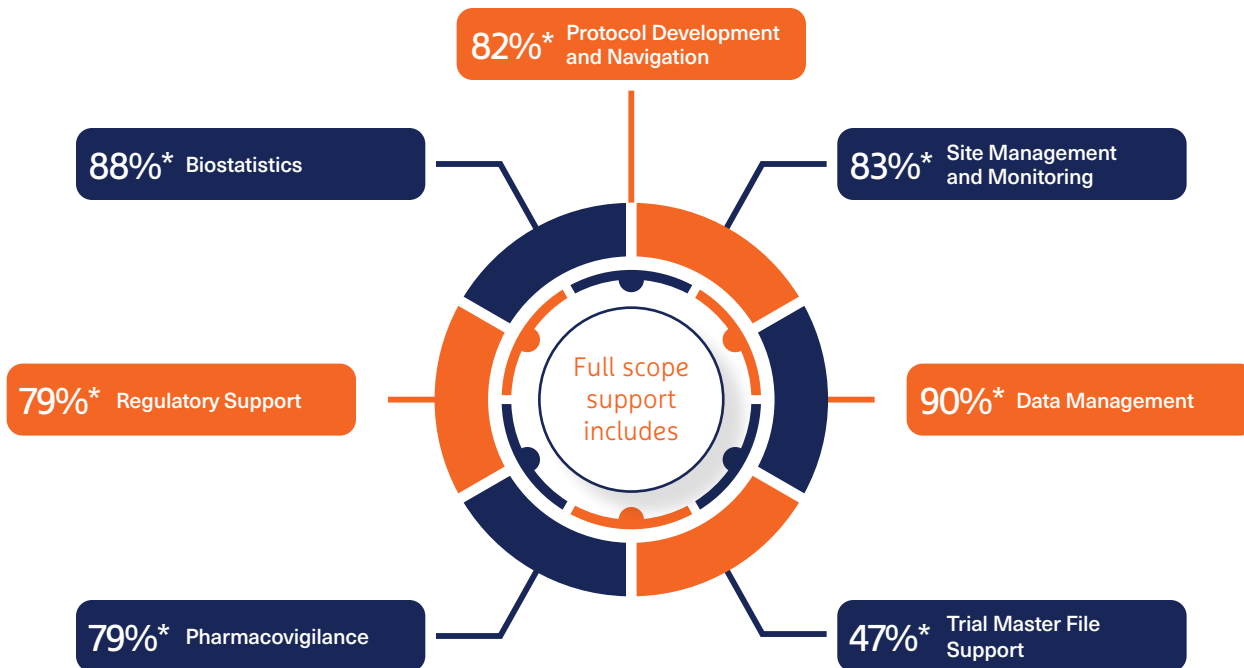
* Indicates percentage of total ophthalmic phases or studies performed globally

Highlights Include:

Serving as the Statistical and Data Coordinating Center (SDCC) and the Contract Research Organization of Record for investigator-initiated trials at the National Eye Institute (NEI) for more than 30 years, our experience, expertise, and capabilities are used to inform and set the biopharma sector's professional standards.

Our full-service expertise at a glance:

- Managed Phase 1 and Phase 2 Macular Telangiectasis (MacTel) studies including continued support for a natural history observation registry resulting in 25+ manuscripts.
- Conducted two international Macular Telangiectasis (MacTel) Phase 3 studies leading to a BLA submission in 2023.
- Served as the coordinating center for SCORE and SCORE 2 studies leading to 40+ coauthored peer-reviewed manuscripts and 60+ conference presentations.
- Coordinating center for AREDS and AREDS2 studies resulting in OTC AREDS vitamins and leading to 90+ co-authored peer-reviewed manuscripts and 119 Conference presentations.
- Provider for first-in-human gene transfer study in AMD since 2010.
- Managing two first-in-human gene transfer studies since 2014 in Stargardt's Disease and Usher's Syndrome.
- Collaborating on a first-in-human RPESC-derived RPE Transplantation as a potential therapy for dry AMD.



* Indicates percentage of total ophthalmic services performed globally

For additional information on our Ophthalmology Therapeutic Research Unit, please visit www.emmes.com/ophthalmology